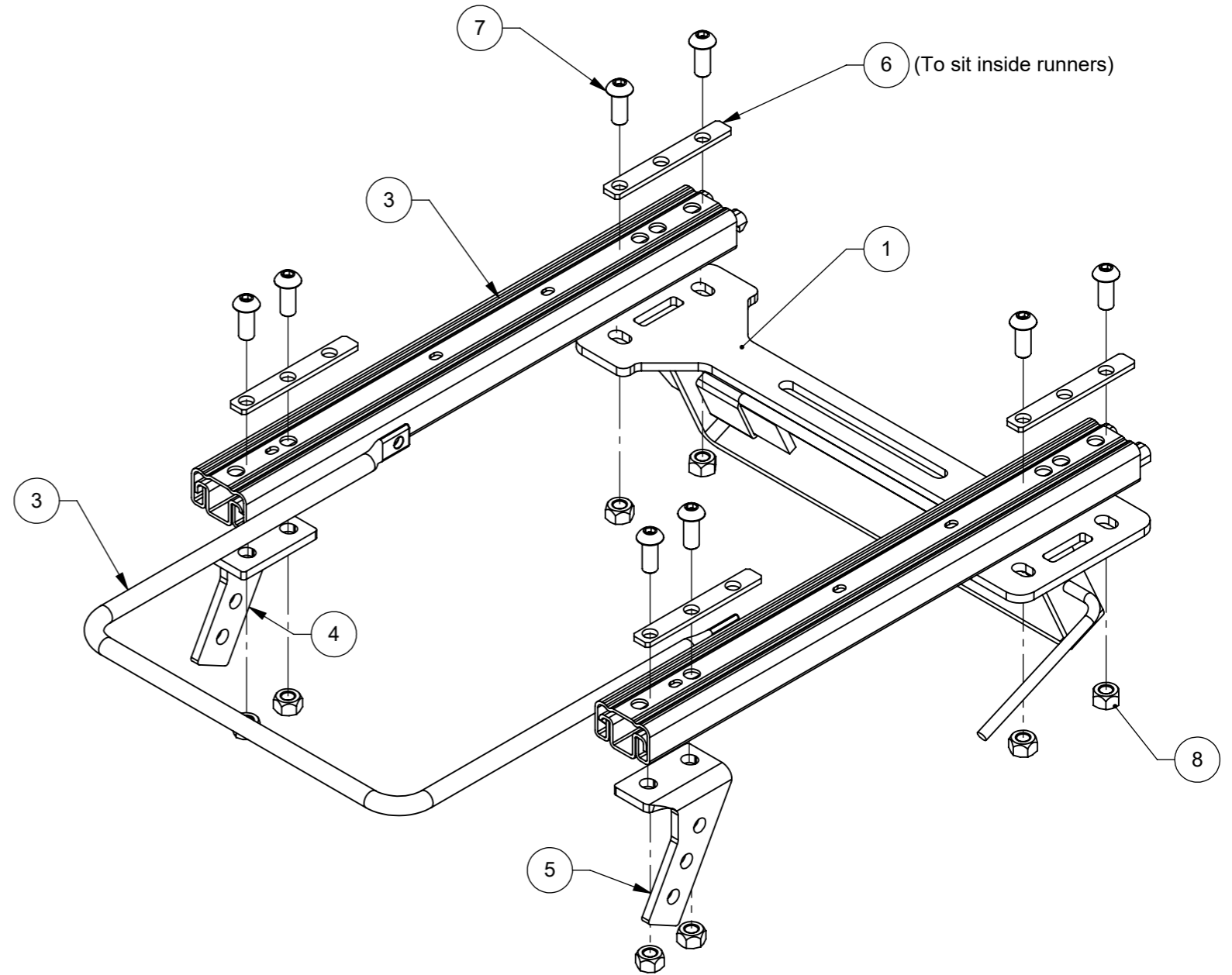
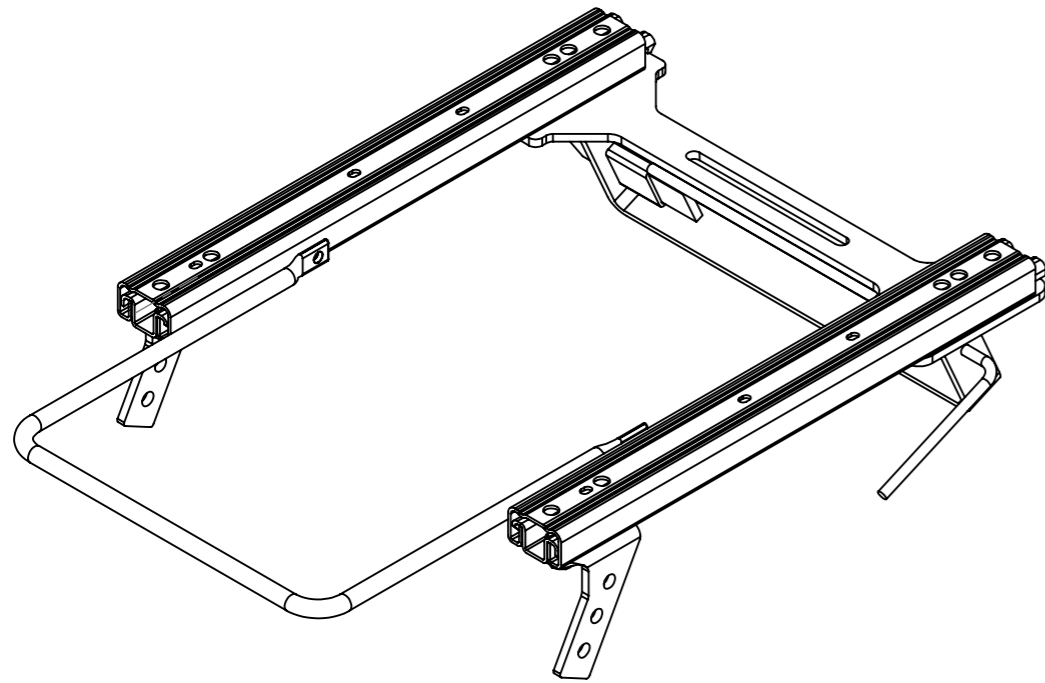


IF IN DOUBT ASK

THIS DRAWING AND ANY INFORMATION OR DESCRIPTIVE MATTER SET OUT HEREIN IS THE CONFIDENTIAL COPYRIGHT OF COBRA SEATS LIMITED AND IS ISSUED FOR INFORMATION PURPOSES ONLY AND MUST NOT BE DISCLOSED TO THIRD PARTIES, LOANED, REPRODUCED IN WHOLE OR IN PART OR USED FOR MANUFACTURING, TENDERING OR FOR ANY OTHER PURPOSE WITHOUT THEIR WRITTEN CONSENT.

ITEM NO.	DESCRIPTION	QTY.
1	Locking Mini Rear Striker Assembly	1
3	Standard Runners	1
3	Standard Runner Narrow Handle	1
4	Front Leg (RH)	1
5	Front Leg (LH)	1
6	Locking Mini Spreader Washer	4
7	M8 x 20mm Button Head Bolt	8
8	M8 Nylock Nut	8



Note:

This subframe is shown assembled as a UK drivers side subframe. For UK passenger side the rear striker assembly will be mirrored, and the rest of the frame is identical. Therefore a left handed Striker assembly will be needed

CN	REV	CREATED	APP	DATE	DETAILS
1st Rel	-	TD	AW	30/8/24	1st Release

WELD SYMBOLS TO ISO 2553

DO NOT SCALE DRAWING

UNLESS OTHERWISE SPECIFIED: DIMENSIONS ARE IN MILLIMETERS		MATERIAL: N/A	FINISH: N/A	Cobra Seats Ltd. Units D1 & D2 Halesfield 23 Telford Shropshire TF7 4NY  Tel: 01952 684020 Email: adam@cobraseats.com		DRAWING TYPE Work in Progress	Issue Status: N/A
TOLERANCES:  FABRICATION   MACHINED / CNC LINEAR: +/- N/A   LINEAR: +/- N/A ANGULAR: +/- N/A   ANGULAR: +/- N/A MACHINED SURFACE ROUGHNESS $\frac{3.2}{\sqrt{}}$ U.O.S DEBURR AND BREAK SHARP EDGES		SPECIFICATION: N/A	SPECIFICATION: N/A			FIRST DRAWN BY: TD 19/08/2024	DESCRIPTION: Frame Assembly Drawing
LAST EDITED BY: N/A N/A						DRAWING NUMBER/REF: Locking Mini Assembly	
				PROJECTION 3rd ANGLE	SCALE: 1:5	A3	SHEET 1 OF 1