

# POWERFLEX®

## PART NUMBER

# PFF25-301G

## DESCRIPTION

# FRONT LOWER ARM FRONT BUSH CASTER OFFSET

## INSTALLATION GUIDE

### Contents (parts per pack):

2 x Polyurethane Bushes      1 x PTFE/Silicone Grease  
2 x Stainless Steel Sleeves

Please read the complete fitting instructions and check package components before fitment. These fitting instructions are to be used as a guide and in conjunction with workshop manual.

It is recommended that:

- all work to be carried out by a licensed technician;
- all safety precautions adhered to;
- wheel alignment to be checked and adjusted as required after any suspension work.
- All fasteners must be tensioned to manufacturer's torque settings.



### Fitting Instructions:

1. Remove original bush and clean away any dirt or corrosion from the vacant hole, remembering to also file away any sharp edges with a rounded file.

2. Using a vice or press, Push the Polyurethane Bush into the bore of the arm, until both lips sit on the outer surface of the bore and the bush sits flush. Ensure to acknowledge the positioning of the Polyurethane bush in the arm, taking note of Figure 1 where the larger lip is inserted first.

**TIP: Apply washing up liquid to the outer surface of the bush to lubricate it when pressing the bush into the bore, remembering to also have the bush at an angle when beginning the insertion process.**

3. Apply some of the supplied grease to the outer surface of the Stainless Steel Sleeve and insert it into the bore of the Polyurethane Bush, using the offset of the Stainless Steel Sleeve to adjust the desired caster.

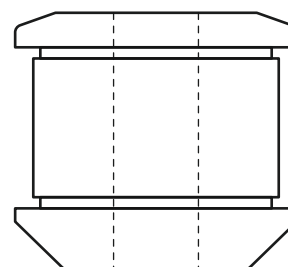
**NOTE: Insert the Stainless Steel Sleeve with respect to Figure 2, which shows how to achieve maximum caster adjustment. As the bore of the Stainless Steel Sleeve gets further from the middle of the car, the caster will increase.**

4. Refit the arm to the subframe, remembering to tension all hardware to manufacturers recommended torque settings.

TOP OF CAR



Stainless Steel Sleeve



Polyurethane Bush



Arm

Figure 1

MIDDLE OF CAR

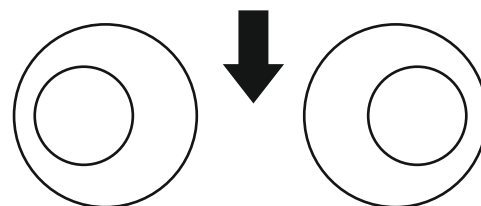


Figure 2- Sleeve Positioning for Maximum Caster Adjustment