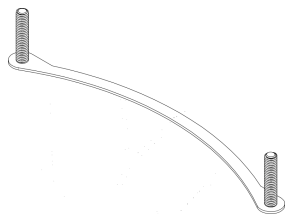
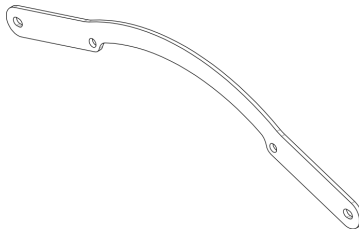


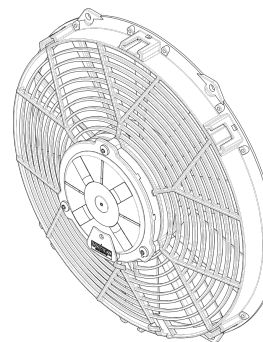
KIT CONTENTS



☐ 12" FLUSH MOUNT SET
Part No. FM305
x1 Kit



☐ FAN BRACKETS
Part No. 130107
x2



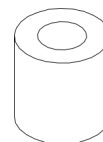
☐ 12" BLOWING FAN
Part No. F27P-12E8101-11B
SUMITO250-2W
x1



☐ M6 WASHER
x4



☐ M6 NYLOC
x4



☐ M6x12.5 SPACER
Part No. 140010
x4

SIGNED OFF BY: _____ DATE: _____

FUSE SIZING

To prevent damage if a cooling fan gets blocked, the circuit powering the fan needs a time-delay type fuse with the correct amperage rating.
This installation uses 1x blowing fan - part number FAN0166HP (F27P-12E8101-11B).
The nominal running current is 11 amps.

IMPORTANT NOTES

This Revotec cooling kit has been engineered to provide perfect replacement for your Discovery 2 air conditioning fan. However it is essential that the other components in the air conditioning system are operating correctly. The following must be checked:

1. The air conditioning radiator has a normal life expectancy of approximately 8-9 years, after this time it should be thoroughly assessed and any signs of deterioration, such as furring up internally or distortion, a replacement is recommended.
2. The radiator fins must be clear of all debris such as mud and leaves.
3. The system must be filled with the correct refrigerant to the correct pressures.
If in doubt, consult a vehicle air conditioning specialist.
5. This kit is designed to fit original, unmodified vehicles only.

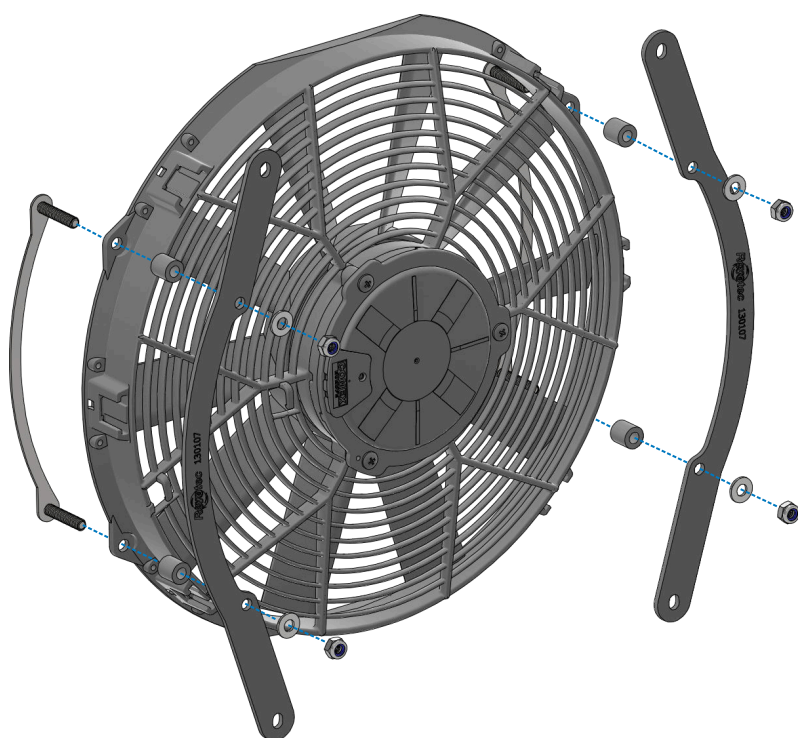
Installations are to be undertaken by a competent vehicle mechanic.
If in doubt, consult a qualified professional.

Always work in a safe environment and wear PPE where necessary.

Disconnect the vehicle battery before beginning installation.

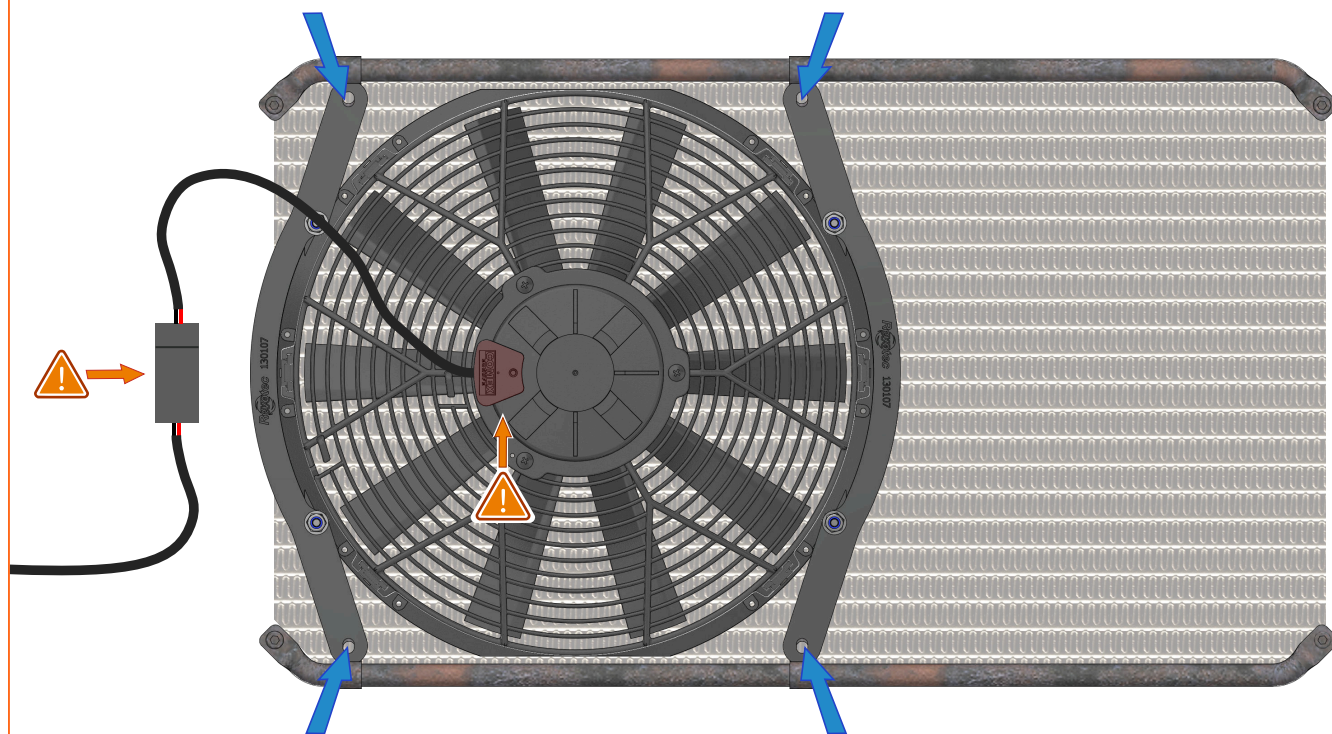
Failure to comply with the above may result in your warranty being void.

STEP 1



Assemble the supplied fan as shown above, with the flush mounts inserted from the rear face of the fan. Slide a plastic spacer over each protruding thread. Position one of the supplied fan brackets over each pair of flush mount studs. Each stud will then require a washer before the nyloc nuts are loosely wound down onto the visible thread. Ensure the flush mounts are flat against the rear of the plastic fan shroud before fully tightening.

STEP 2



Remove the vehicle grille, cross braces and fan according to the workshop manual. Ensure the original fan fixings are kept, as these are used to secure the replacement fan to the upper and lower fan fixing tabs. When positioning / securing the replacement fan, take note of the orientation shown above (the power cable is to exit nearest the fan connector on the left hand side). Replace the original fan fixings, one in each corner of the new fan assembly. Connect the fan to the vehicle power connector and secure all cables. Ensure the fan is free-spinning and that the assembly is not twisted. Test the fan operation prior to re-installation of the braces and grille.