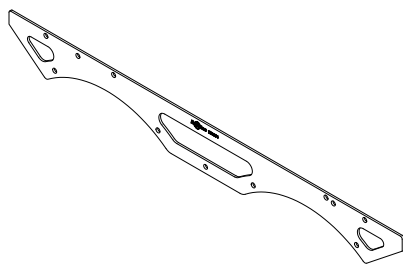
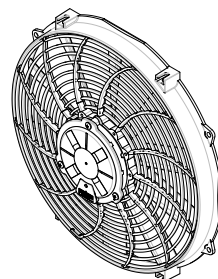


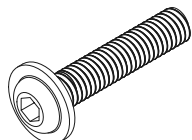
KIT CONTENTS



☐ FAN BRACKET
Part No. '130194'
x2



☐ 13" HP SUCTION FAN
Part No. 'FAN0429HP'
x2



☐ M6x30 FLANGE
BOLT x8



☐ M6 WASHER
x8



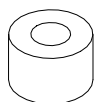
☐ M6 NYLOC
x8



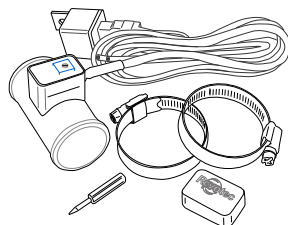
☐ CABLE CLIP
x1



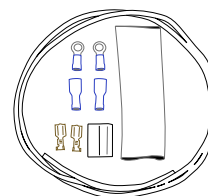
☐ SELF-TAPPING
SCREW
x4



☐ M6 4mm SPACER KIT
x2 (x8 pcs. TOTAL)



☐ ELECTRONIC FAN CONTROLLER
Part No. 'EFC35LR' x1



☐ TWIN FAN
EARTH KIT x1

SIGNED OFF BY: _____ DATE: _____

FUSE SIZING

To prevent damage if a cooling fan gets blocked, the circuit powering the fan needs a time-delay type fuse with the correct amperage rating.
This installation uses 2x 13" suction fans - part numbers FAN0429HP (F53-12E8103-28S).
The nominal combined running current of both (**connected in parallel**) is 18.5amps.

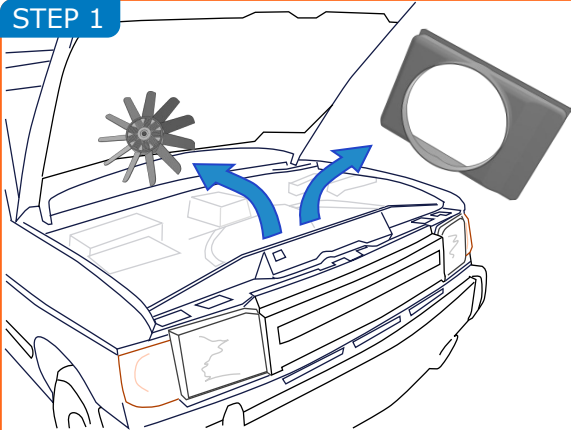
IMPORTANT NOTES

This Revotec cooling kit has been engineered to provide perfect cooling for your Land Rover Discovery 1 V8. However it is essential that the other components in the cooling system are operating correctly. The following must be checked:

1. The radiator has a normal life expectancy of approximately 8-9 years, after this time it should be thoroughly assessed and any signs of deterioration, such as furring up internally or distortion, a replacement is recommended.
2. The radiator fins must be clear of all debris such as mud and leaves.
3. The system must be filled with the correct coolant.
4. The water pump and thermostat must be operating correctly.
5. This kit is designed to fit original, unmodified vehicles only.

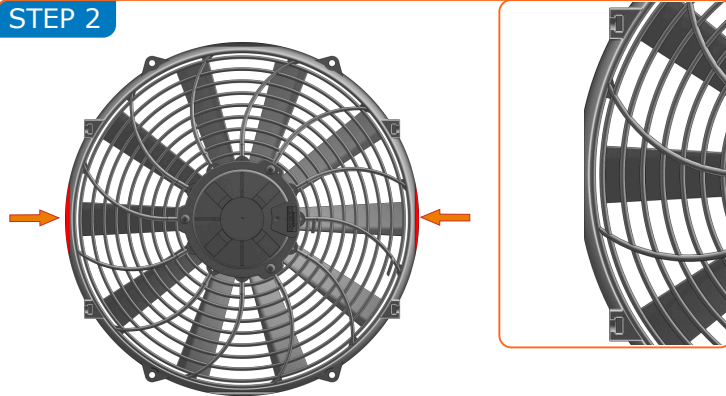
Installations are to be undertaken by a competent vehicle mechanic.
If in doubt, consult a qualified professional.
Always work in a safe environment and wear PPE where necessary.
Disconnect the vehicle battery before beginning installation.
Failure to comply with the above may result in your warranty being void.

STEP 1



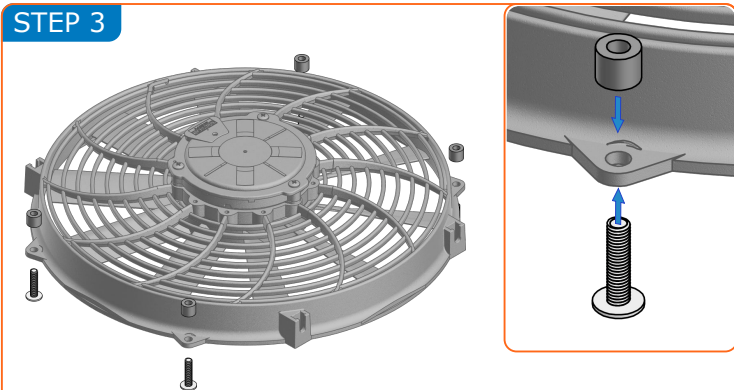
Remove the viscous fan assembly and fan shroud from behind the radiator. This cooling kit can be installed with the radiator in the vehicle.

STEP 2



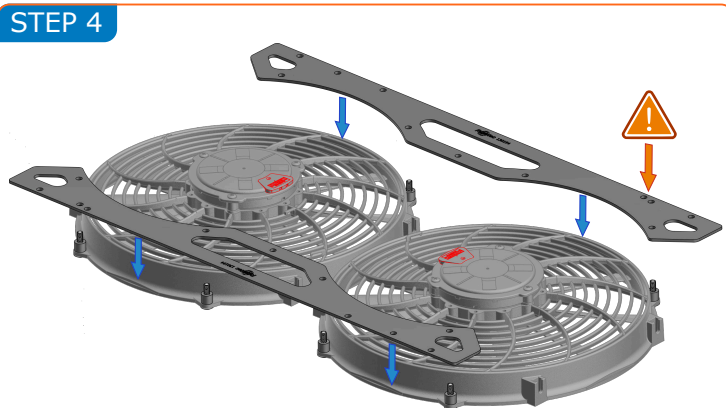
To allow fan fitting, the supplied fan shroud features removable edges that need trimming. With the fan cable entry point facing left or right, use a pair of side cutters (or similar) to trim the two side edges back to the straight edge (shown above).

STEP 3



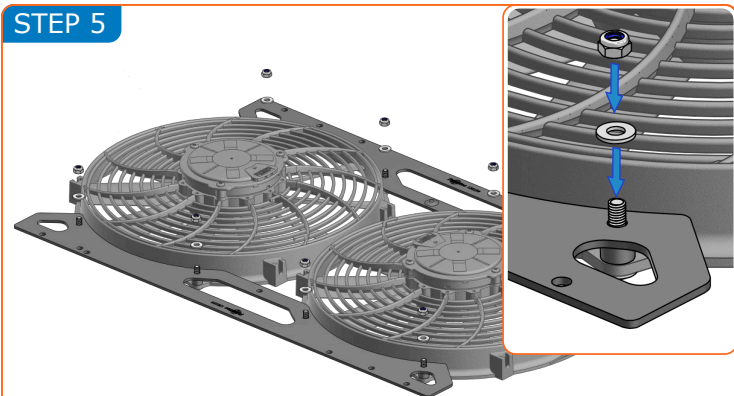
With the supplied fans facing upward, insert the M6 flanged head screws through the fan fixing tabs from the underside (4x per fan). Lay the fans down on a clean flat surface, then position one of the supplied spacers over each protruding M6 thread. Follow this step for both fans.

STEP 4



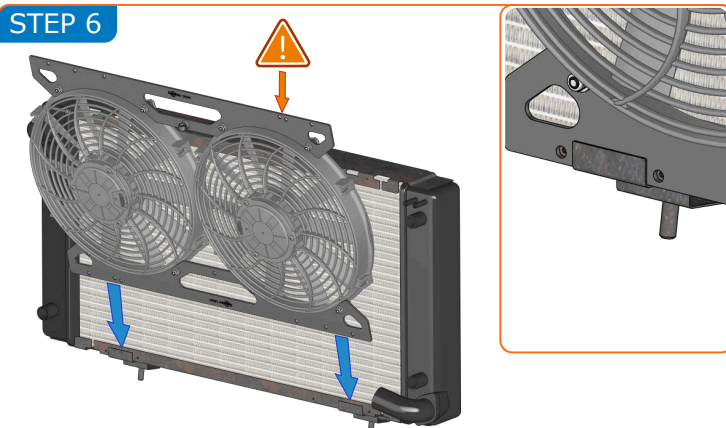
Rotate the fans to ensure the cable entry points are facing each other (shown in red above). Position the upper and lower brackets over the protruding studs. Please note, the top bracket fixing hole positions are critical to allow fitting - ensure the two closest holes are situated in the top right corner (shown above).

STEP 5



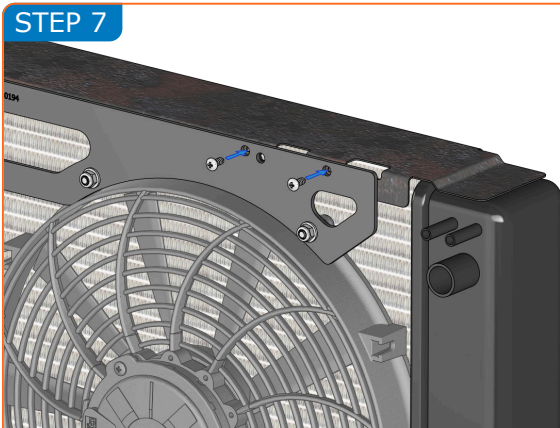
With the brackets positioned correctly, add an M6 washer and M6 nyloc nut to each screw thread. Using a 4mm allen key and 10mm socket, tighten the fixings, taking care not to over-tighten.

STEP 6



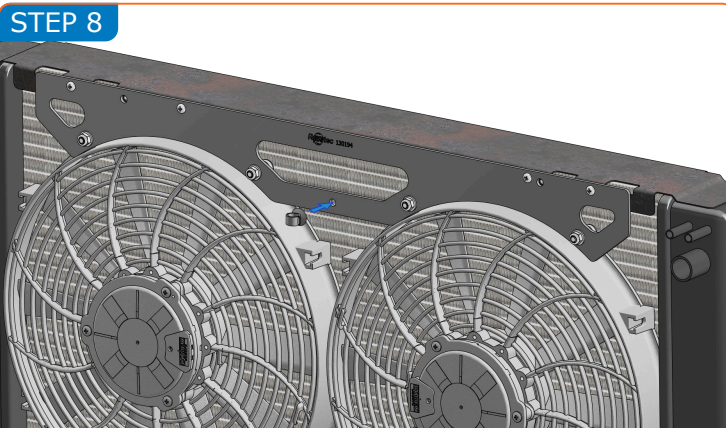
Lower the bottom bracket into the radiator metal channels (bottom rear edge). Some minor manipulation may be required to ensure the bracket sits flush with the bottom of the radiator. Note the bracket hole positions top right of the assembly.

STEP 7



Using the supplied self-tapping screws, secure the assembly to the top edge of the radiator (4x positions). Ensure the fans are free-spinning and that the assembly is not twisted. Check there is a uniform gap around the fan blades.

STEP 8



A cable clip is provided to retain the power cables for safe routing. Refer to included Revotec Fan Controller and Twin Earth Kit instructions for next steps.