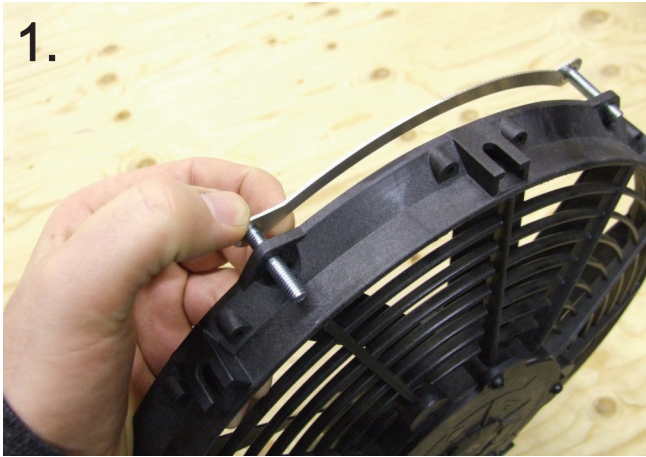


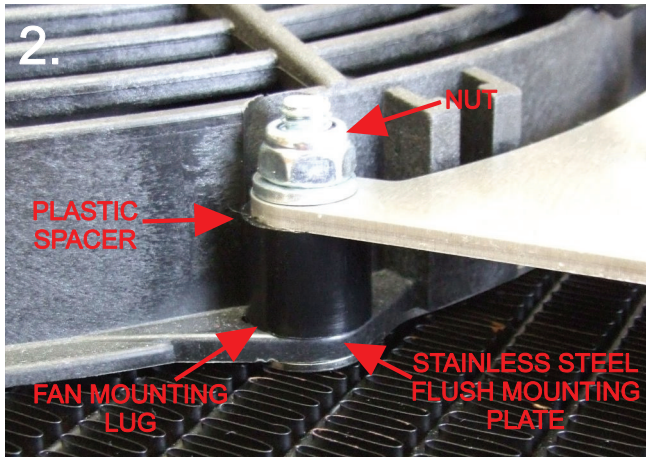
MINOR COOLING KIT

1.



1. Disconnect +ve battery terminal, drain water system and remove the top hose. Remove the original fan and re-fit the water pump pulley with the original bolts. Loosen the 4 radiator mounting bolts.
2. Assemble the fan and brackets by pushing the stainless steel flush mounting plates through the mounting lug on the fan (1.) slide on the plastic spacers and then the brackets (orientation 3.) with the slightly taller bracket on the bottom. Then use the supplied M6 washers and nuts (nut, washer, spacer fan and flush mount orientation shown in 2.).
3. Slide the fan assembly over the radiator and the flanges on front the bulkhead with the fan orientated towards the passenger side of the car using the original radiator mounting bolts. Hold the fan up towards the radiator and tighten the 4 mounting bolts.
4. Remove and cut a 1" section from the middle of the bottom hose, mount the Electronic Fan Controller using the supplied clips and re-fit the top and bottom hoses and refill the water system.
5. Follow the EFC instructions supplied for setup information.

2.



3.

