

Ford Focus ST MK3 Stainless Steel Lower Sports Grille

Kit Contents: -

1. off Lower Grille



Lower Mesh Grille Fitting Instructions

1. Fit masking tape around the apertures to protect the paintwork while fitting (fig 1).
2. Offer the grille to aperture and gently push the grille into position making sure all the brackets clip behind the aperture (fig 2 & 3).
3. Using a thin screwdriver through the mesh lever all the brackets so they are tightly into position (fig 4).
4. Remove the tape and the grilles are now complete.



Fig 1



Fig 2



Fig 3

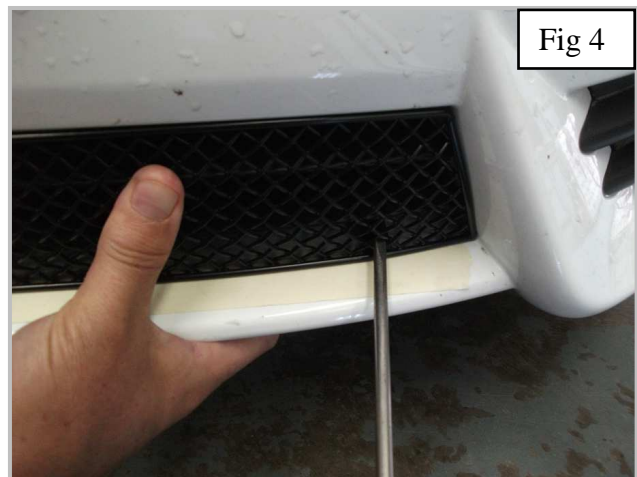


Fig 4