

# Ford Transit Connect Stainless Steel Sports Upper Grille

**Kit Contents:**

- 1 off Upper Grille
- 4 off No 6 x 3/4 " Screws



**Upper Mesh Grille Fitting Instructions**

1. Fit masking tape around the apertures to protect the paintwork while fitting.
2. Locate grille into the aperture making sure to guide the brackets through the aperture as shown in fig 1.
3. Check that all the brackets have located behind the aperture and check they have engaged properly by using a thin screw driver as shown in fig 2 & 3.
4. Once the grille is securely in position fix the grill to the plastic using the 2 screws as shown in fig 3.
5. The Grilles are now complete.

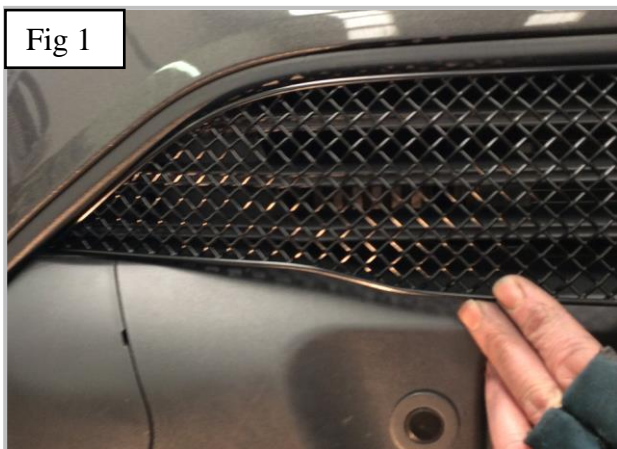


Fig 1



Fig 2



Fig 3



Fig 4

**THANK YOU FOR CHOOSING A ZUNSPORT PRODUCT.**