

Ford Ranger 4x4 Lower Stainless Steel Sports Grille

Kit Contents: -

- 1. off Centre Grille
- 2. off 3/4" Screws



Centre Mesh Grille Fitting Instructions

<https://www.youtube.com/watch?v=4IV9ivdH-gM>

1. Fit masking tape just around the edges of the apertures to protect the paintwork while fitting.
2. Carefully guide the grille into the aperture (fig 1) making sure the brackets have located behind the existing aperture (fig 2).
3. Ensure grille is fitted securely and brackets have engaged and clipped in place. (Check this using a long thin screwdriver as shown in fig 3).
4. Screw threv diamonds in top left hand side and top right hand side using screws provided to fasten grille to vehicle (fig 4).
5. Remove the tape and the grilles are now complete.



Fig 1



Fig 2

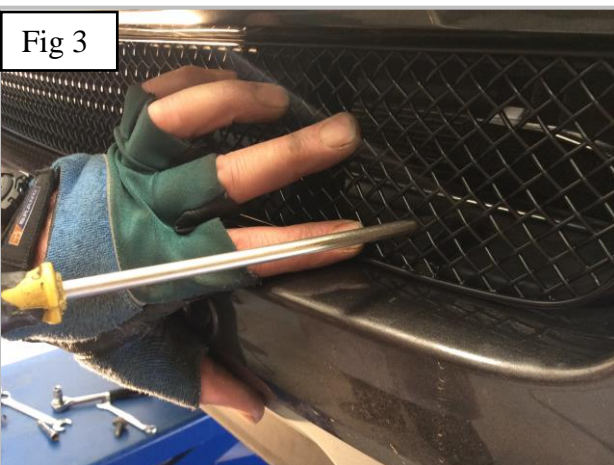


Fig 3



Fig 4

THANK YOU FOR CHOOSING A ZUNSPORT PRODUCT.