

Isuzu DMAX

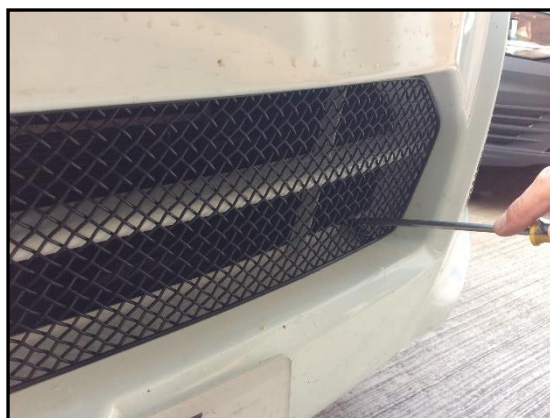
Stainless Steel Lower Sports Grille

Kit Contents: -

1 off Lower Grille

Tools Required: -Masking Tape
Thin Flat Screwdriver
Screwdriver**Lower Mesh Grille Fitting Instructions**https://www.youtube.com/watch?v=g7_Uu7y148g

1. It is advised that masking tape is used to protect the original trim whilst fitting. Position the tape so that it can easily be removed after fitting.
2. Offer the grille into the left side of the aperture first and then into the right side of the aperture, slightly flexing the grille, then gently push the grille into position making sure all the brackets clip behind the aperture making sure the bottom brackets are secured first (fig 1 & 2).
3. Using a thin screwdriver through the mesh lever all the brackets so they are tightly into position (fig 3).
4. Remove the tape and the grilles are now complete.



THANK YOU FOR CHOOSING A ZUNSPORT PRODUCT.