

Landrover Defender Stainless Steel Sports Upper Grille

Kit Contents:

- 1 off Upper Grille
- 4 off 6mm Washers
- 4 off 6mm Nyloc Nuts
- 2 off Brackets



Lower Mesh Grille Fitting Instructions

1. Firstly remove the existing moulding.
2. Locate the grille into the moulding by slotting the brackets behind the aperture and so the studs locate in the holes and the grille sits in the recess (Fig 1 & 2).
3. Using the nuts & washers provided fasten the grille to the existing moulding starting with the 2 centre nuts first (fig 3).
4. Now the grille is securely in position tighten the end 2 brackets as shown in fig 4.
5. Grille assembly is now complete (fig 5).
6. Attach moulding back to vehicle.
7. See separate instructions for electrical installation.



Fig 1

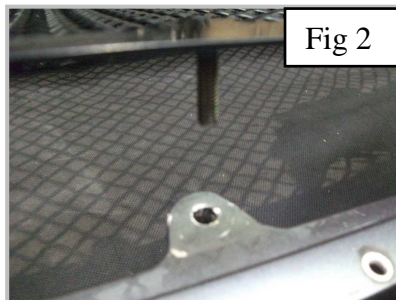


Fig 2

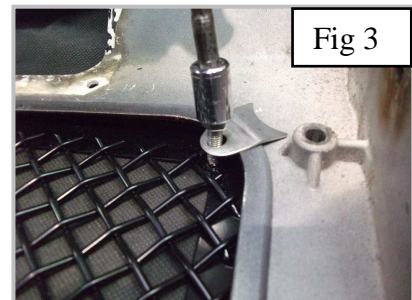


Fig 3

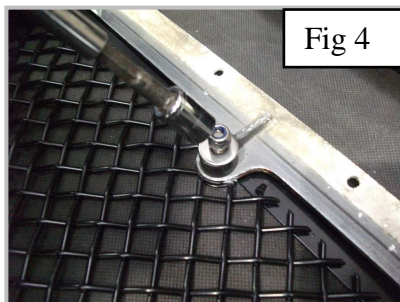


Fig 4

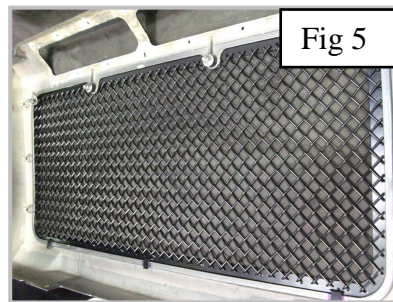


Fig 5