

# MAZDA MX5 MKI

## Stainless Steel Sports Grille Kit

**Kit Contents: -**

- 1. off Mesh Grille

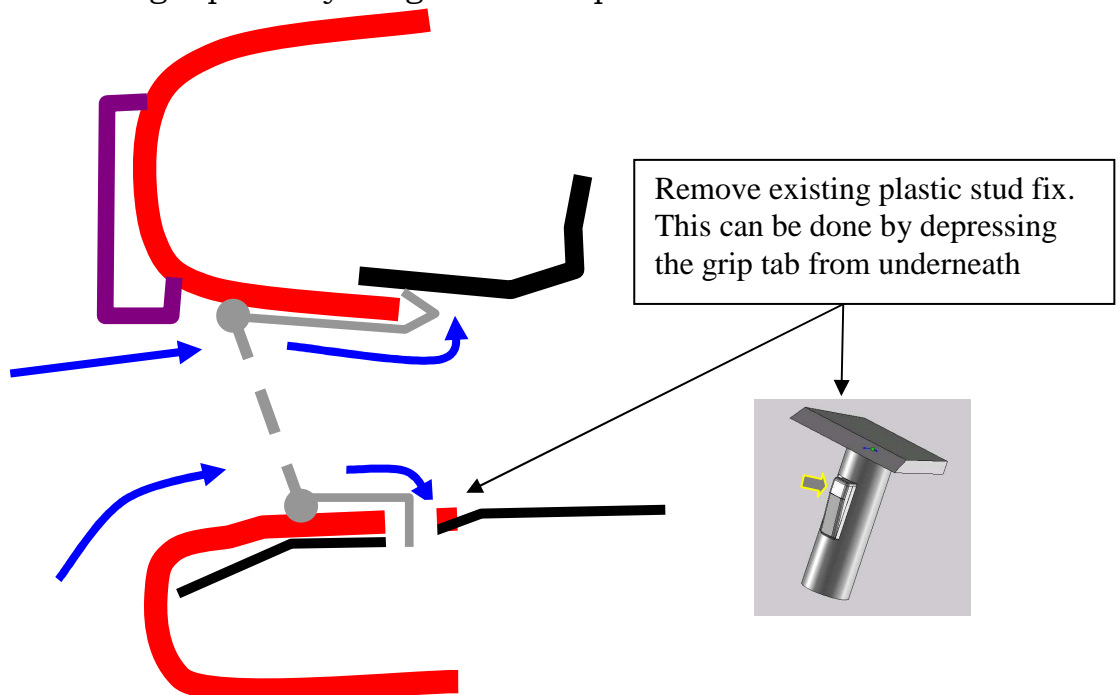
**Tools Required: -**

- Thin Flat Screwdriver



### Mesh Grille Fitting Instructions

1. Place masking Tape around the aperture to protect the paint work, to avoid any accidental scratches to the paint work.
2. It may be necessary to remove the number plate housing on some models if they are non standard imports, this can be replaced once the grille is in place.
3. Remove the lower centre plastic fixing then locate the centre lower bracket of the grille into the hole left behind. (The grille and bracket will hold the panel)
4. Hold down the two upper spring clips and push the grille back into the aperture and over the towing eyes until the clips grip behind the bumper rear edge. (Using a thin screwdriver lever the spring clips in position if they have not held in place)
5. Remove the masking tape and your grille is complete.



**THANK YOU FOR CHOOSING A ZUNSPORT PRODUCT.**