

Mazda MX5 MK2.5

Stainless Steel Sports Fog Lamp Grille Kit

Kit Contents: -

- 2. off Side Vent Grille
- 4. off Spring Clips



Fog Lamp Mesh Grille Fitting Instructions

1. Fit masking tape around the apertures to protect the paintwork while fitting (fig 1).
2. Remove existing plastic inserts.
3. Locate the cardboard template in the aperture and then mark the 2 drilling points where shown on the template (fig 2).
4. Drill the to marked points with a 3mm drill (fig 3)
5. Carefully guide the grille into the aperture making sure the two locating bar go through the drilled holes (fig 4).
6. Turn the steering wheel so that the wheel locks out (fig 5) allowing you to access the 3 screws holding the protective cover in place, then remove the 3 screws (fig 6).
7. Carefully pull back the protective cover to allow access so that you get touch the back of the grille (fig 7).
8. while holding the grille in place with your left hand take the 2 spring clips and push them onto the back of the locating pegs on the back of the grille until they cannot go on any further.
9. Repeat for opposite side grille.
10. Remove the tape and the grilles are now complete.

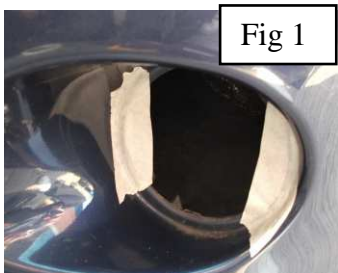


Fig 1



Fig 2



Fig 3



Fig 4



Fig 5



Fig 6

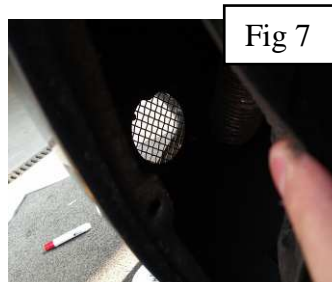


Fig 7



Fig 8

THANK YOU FOR CHOOSING A ZUNSPORT PRODUCT.