

Porsche Cayman 2 Stainless Steel Sports Rear Grille

Kit Contents: -

- 1. off RH Rear Outer Grille
- 1. off RH Rear Inner Grille
- 1. off LH Rear Outer Grille
- 1. off LH Rear Inner Grille



Rear Mesh Outer Grille Fitting Instructions



Fig 1

Drill a 3mm hole into corner off the plastic insert not the bumper as shown in fig 1.



Fig 2

Insert the locating bar on the grille into the 3mm hole (fig 2.)



Fig 3

Push grille into position (fig 3).



Fig 4

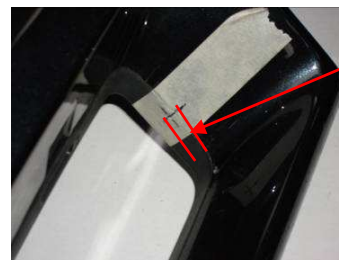
Using a long thin screwdriver bend the hooks so that the grille locks into position (fig 4).

Rear Mesh Inner Grille Fitting Instructions



Fig 5

Masking tape on bumper then
Position grille level with aperture
And apply slight pressure to leave
A mark on the masking tape fig 5.



3mm from
Edge.

Fig 6

Using the mark measure 3mm
from edge of plastic insert (fig 6)



Fig 7

Drill 3mm hole as shown fig 7.
then insert locating bar as previously
Done in fig 2.



Fig 8

Once grille is located using a
thin screwdriver bend the hooks
(fig 8) so that the grille is secure.

YOUR GRILLE IS NOW COMPLETE.