

# Porsche 997.2 C4S Centre Stainless Steel Sports Grille

## Kit Contents: -

1. off Centre Grille



## Centre Mesh Grille Fitting Instructions

1. Fit masking tape just around the edges of the apertures to protect the paintwork while fitting.
2. Carefully guide the Left hand Side of the grille into the aperture (fig 1).
3. Once the left hand side is located guide the right hand side slightly flexing the grille to allow it to locate behind the aperture.
4. Using a pair of pin nose pliers gently grip the grille and pull in towards you (fig 2) being careful not to damage the grille.
5. Using a screwdriver as shown in fig 3 push clips down making sure they locate behind the back aperture & grille is secure.
6. Remove the tape and the grilles are now complete.



Fig 1

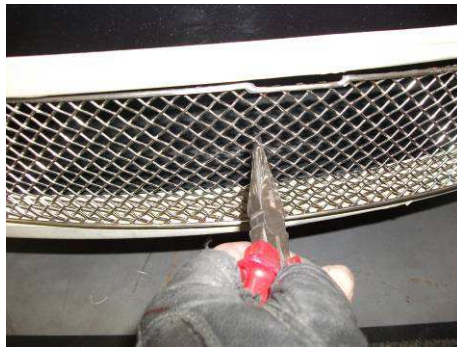


Fig 2



Fig 3