

Porsche 991 Turbo Gen 1 (with parking sensors) Stainless Steel Sports Side Grille Kit

Kit Contents: -

- 1. off LH Upper Grille
- 1. off LH Centre Grille
- 1. off LH Lower Grille
- 1. off RH Upper Grille
- 1. off RH Centre Grille
- 1. off RH Lower Grille
- 4. off No6 x 3/4" Screws



(You Must Fit The Grilles In This Order)

Lower Side Mesh Grille Fitting Instructions

Fitting Video Links:-

https://www.youtube.com/watch?v=LhN_nvQ9fQc

1. Fit masking tape around the apertures to protect the paintwork while fitting.
2. Locate the grille centrally in the aperture guiding the outer part of grille in 1st and making sure it is pushed flush against the aperture (fig 1 & 2)
3. Hold the grille centrally in position then screw into position using screws provided (fig 3).

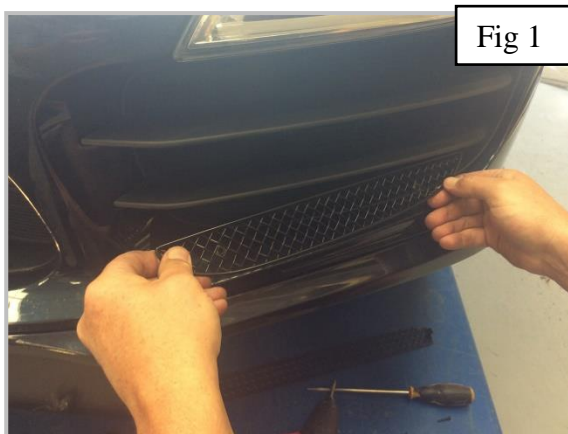


Fig 1



Fig 2



Fig 3

THANK YOU FOR CHOOSING A ZUNSPORT PRODUCT.

Centre Side Mesh Grille Fitting Instructions

1. Fit masking tape around the apertures to protect the paintwork while fitting.
2. Firstly locate the outer bracket making sure it clips behind the parking sensors fig 1.
3. Gently push the front of the grille until the inner bracket clips into position fig 2.
4. You can use a long thin screw driver to make sure the brackets have clipped in position (fig 3).

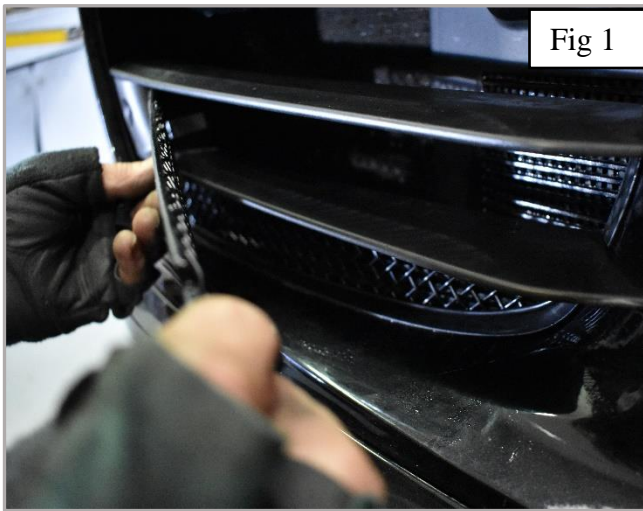


Fig 1



Fig 2



Fig 3

Upper Side Mesh Grille Fitting Instructions

1. Fit masking tape around the apertures to protect the paintwork while fitting.
2. Firstly locate the outer part of the grille behind the aperture fig 1.
3. Then guide the inner bracket behind the aperture until it clips into position fig 2.
4. You can use a long thin screw driver to make sure it has clipped in position (fig 3 & 4)
5. The grilles are now complete.



Fig 1



Fig 2

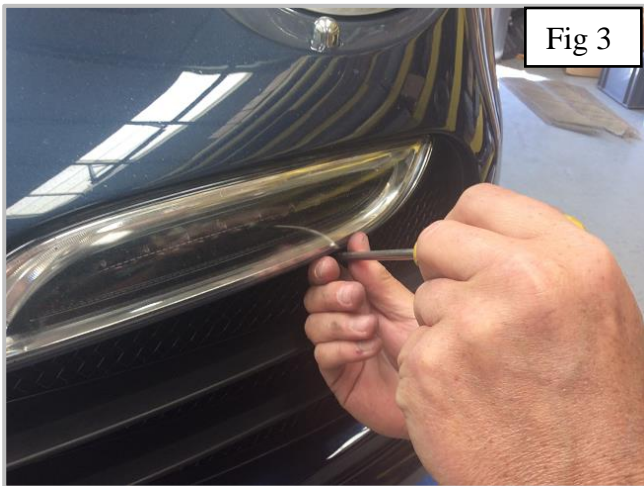


Fig 3



Fig 4