

Porsche 991.2 Turbo Stainless Steel Sports Side Grille Kit

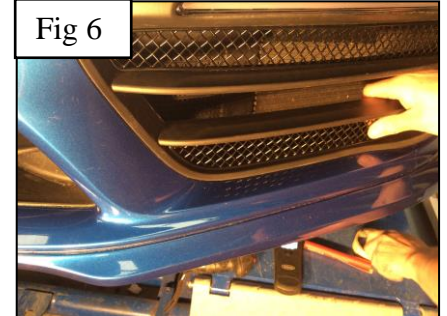
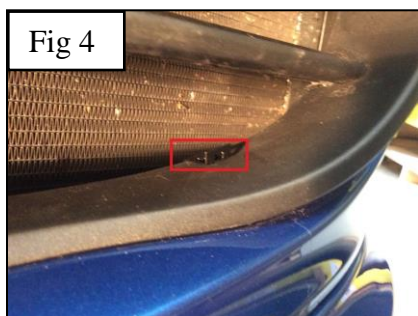
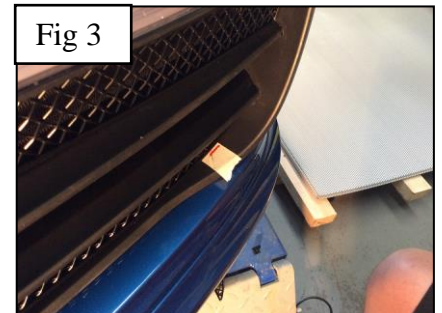
Kit Contents: -

- 1. off LH Upper Grille
- 1. off LH Centre Grille
- 1. off LH Lower Grille
- 1. off RH Upper Grille
- 1. off RH Centre Grille
- 1. off RH Lower Grille
- 2. off Grip Clips



Lower Side Mesh Grille Fitting Instructions **(Please fit the grilles in this order)** YouTube Video Link - <https://www.youtube.com/watch?v=fAc29Rv8CLg>

1. Fit masking tape around the apertures to protect the paintwork while fitting.
2. Firstly locate the grille into the aperture as shown in fig 1, then mark the masking tape so it aligns the centre of the bracket which is on the grille (Fig 2 & 3).
3. Remove the grille then push the grip clip onto the aperture as shown in fig 4.
4. Carefully guide the grille back into the aperture making sure that the hook bracket is located behind the aperture and the other bracket has been pushed into the grip clip (holding grip clip in place whilst pushing grille in aperture fig 5). To ensure the grille is securely in place put your hand through the centre aperture (fig 6) and push centre of grille outwards whilst pushing inner of grille inwards.
5. Repeat steps 1 - 4 to the opposite grille.
6. The grilles are now complete.



Upper Side Mesh Grille Fitting Instructions

1. Fit masking tape around all of the apertures to protect the paintwork while fitting.
2. Locate Grille Level with aperture Fig 1.
3. Insert the Grille into the aperture locating the outer edge first and then the inner afterwards as shown in fig 2.
4. Secure the brackets in place using a long thin screwdriver fig 3
5. Repeat steps 1, 2, 3 and 4 to the opposite grille.
6. Remove the tape and the grilles are now complete.

**Centre Side Mesh Grille Fitting Instructions**

1. Fit masking tape around all of the apertures to protect the paintwork while fitting.
2. Locate Grille Level with aperture.
3. Insert the Grille into the aperture locating the outer edge first and then the inner afterwards as shown in fig 1.
4. Secure the brackets in place using a long thin screwdriver fig 2
5. Repeat steps 1, 2, 3 and 4 to the opposite grille.
6. Remove the tape and the grilles are now complete.

