

Porsche 991.2 Turbo and Turbo S Stainless Steel Sports Centre Grille

Kit Contents: -

- 1 off Centre Grille
- 4. off No6 x 2" screws

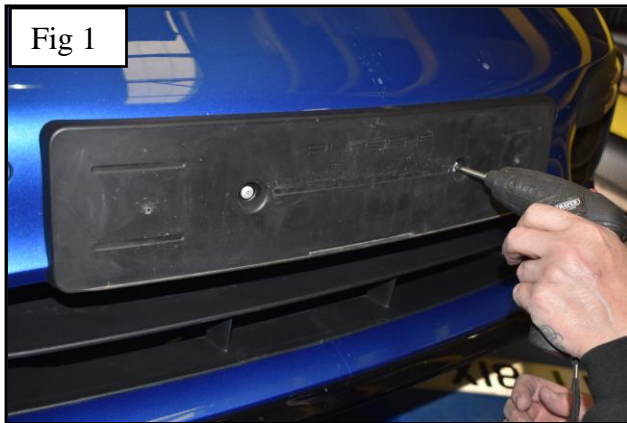


YouTube Tutorial

<https://www.youtube.com/watch?v=8VCHw2-tm40>

Centre Mesh Grille Fitting Instructions

1. Fit masking tape around the apertures to protect the paintwork while fitting.
2. Remove License plate holder and cut out the small lip as shown in fig 1 and 2.
3. Carefully guide the grille into the aperture as shown in fig 3.
4. Once the grille is in position fix the grill to the plastic using the 4 screws as shown in fig 4.
5. Remove the masking tape and the grille is now complete



THANK YOU FOR CHOOSING A ZUNSPORT PRODUCT.