

Subaru 2010 STI

Stainless Steel Sports Bonnet Scoop Grille

(For Ease Of Fitment Removal Of Front Bumper Highly Recommended)

Kit Contents: -

- 1. off Mesh Grille
- 1. off Plastic Scrivet

Tools: -

- Pliers / Cutters
- 3mm Drill
- Rule



Bonnet Scoop Mesh Grille Fitting Instructions

1. Remove all fixing from underneath bonnet then totally remove scoop from car.
2. Locate grille to back of scoop then mark the 2 locating pegs on masking tape as shown in fig 1, then continue the marked line down the inside of the scoop as shown in fig 2. Then repeat for opposite side of scoop.

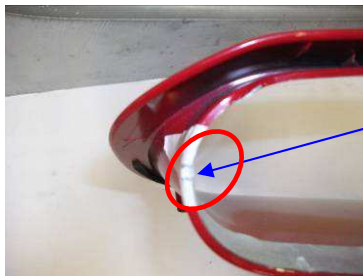


Fig 1



Fig 2

3. Mark a line 15mm from back edge of scoop as shown in fig 3 & 4 then repeat for opposite side of scoop.



Fig 3

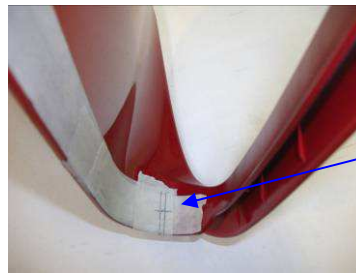


Fig 4

4. Once the marking out positions have been done drill 3 hole one side of the scoop to the markings as shown in fig 5 then repeat for opposite side of scoop.



Fig 5

5. After drilling the hole masking tape the lower edge of the scoop then locate the grille in the scoop from the back inserting the left hand side peg 1st then the right hand side peg.

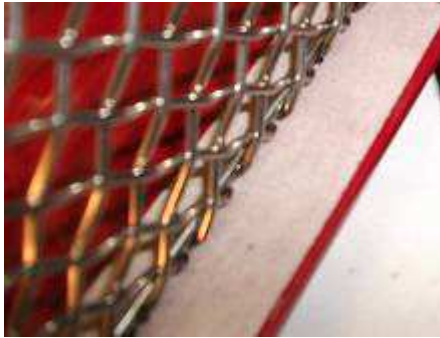


Fig 6

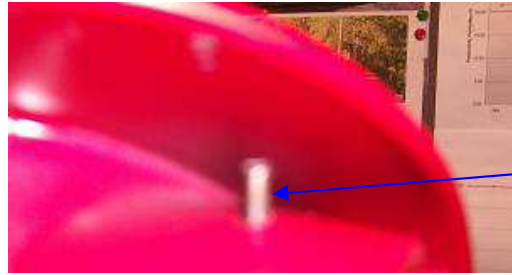


Fig 7

6. Once grille is located in scoop mark out drilling position for plastic scrivet as shown in fig 8 then drill 4mm hole. Insert scrivet then push plastic part on scrivet down with pliers as shown in fig 9.



Fig 8

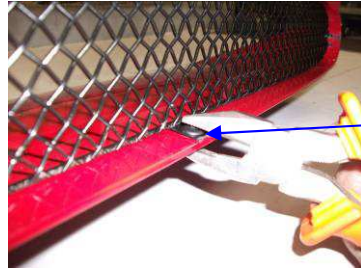


Fig 9

7. The grille is locked in its final position now so cut the excess off location peg as shown in fig 10. Fit scoop back to your car, your grilles are now complete.



Fig 10