

# Subaru 2010 STI

## Stainless Steel Sports Airdam Grille Set

**(For Ease Of Fitment Removal Of Front Bumper Highly Recommended)**

**Kit Contents: -**

- 1. off LH Mesh Grille
- 1. off RH Mesh Grille
- 2. off 3mm Retaining Washers

**Tools: -**

- Pliers / Cutters
- 3mm Drill



**LH & RH Mesh Grille Fitting Instructions**

1. Locate mesh grilles to aperture and locate lower locating hooks in position as shown in fig 1.

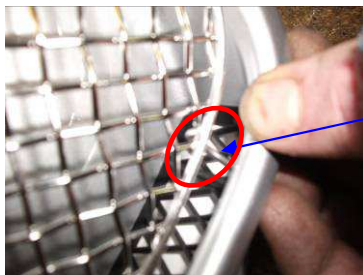


Fig 1

2. Make sure the location hook is level with the plastic bracket as shown in fig 2.



Fig 2

3. Once the grille is located apply pressure to top location pegs as shown in fig 3 to leave mark for drilling.

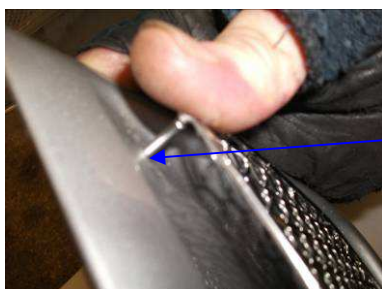


Fig 3

4. After leaving drilling position remove grille then drill hole using 3mm drill as shown in fig 4 & 5.



Fig 4



Fig 5

5. When you have drilled holes relocate the grille as in fig 1 & 2 then fit the upper location pegs into the drilled holes as shown in fig 6.



Fig 6

6. Once the grille is fully in position push on retaining locking washer fig 7 then push washers down until level with plastic fig 8.



Fig 7



Fig 8

7. The grille is locked in its final position now so cut location peg as shown in fig 9. Your grilles are now complete.



Fig 9