

VW Caddy Facelift MY16 Stainless Steel Lower Sports Grille (With Bumper Lights)

Kit Contents: -

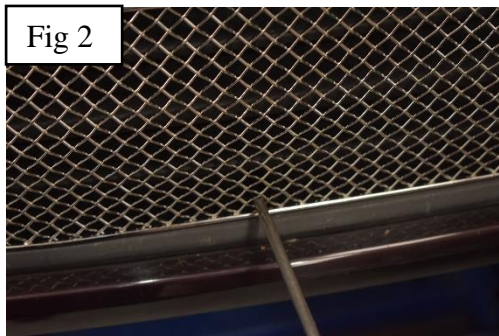
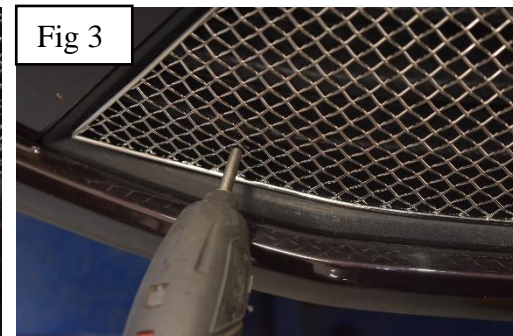
- 1. off Centre Grille
- 4. off No6 x 1 ½" Screws

**YouTube Tutorial:**

<https://www.youtube.com/watch?v=IsGjqmpYXEI>

**Lower Mesh Grille Fitting Instructions**

1. Fit masking tape around the apertures to protect the paintwork while fitting.
2. Locate grille to the aperture and centralise the grille as shown in fig 1.
3. Carefully push and guide the upper and lower centre brackets behind the aperture and check they have engaged properly by using a thin screw driver as shown in fig 2.
4. Fasten grille to existing aperture using the screws provided as shown in fig 3.
5. Remove the tape and the grilles are now complete.

Fig 1**Fig 2****Fig 3**

THANK YOU FOR CHOOSING A ZUNSPORT PRODUCT